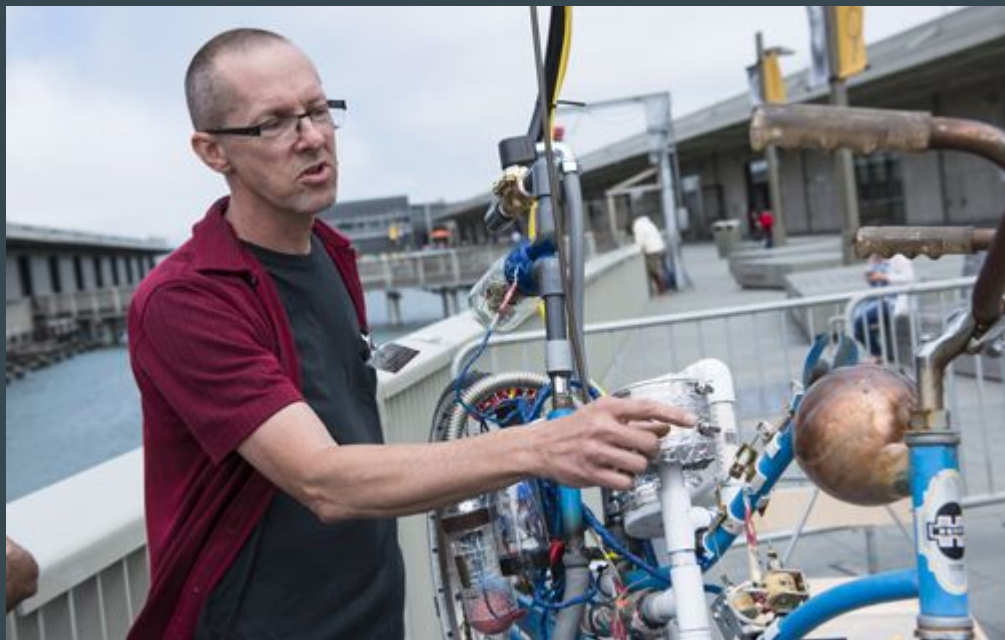
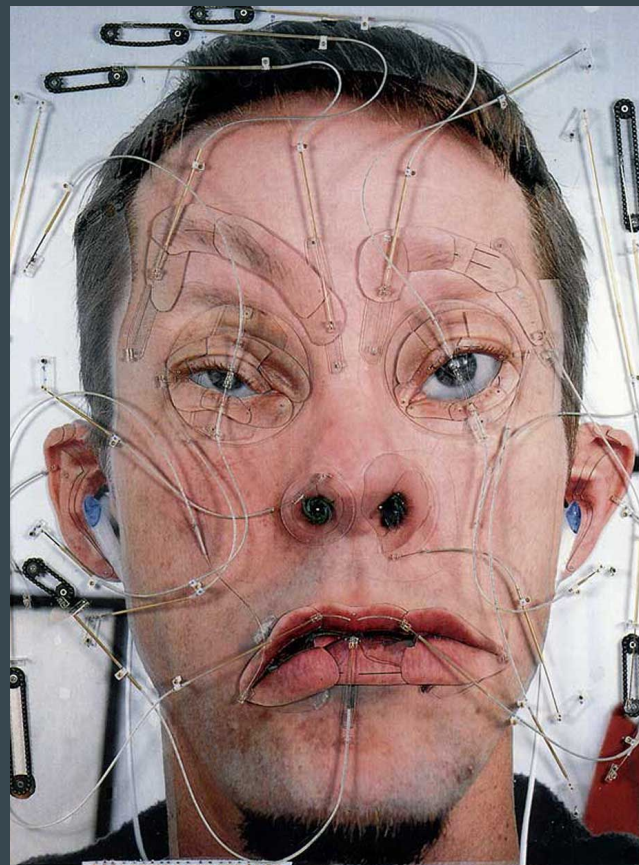


Tim Hawkinson
...

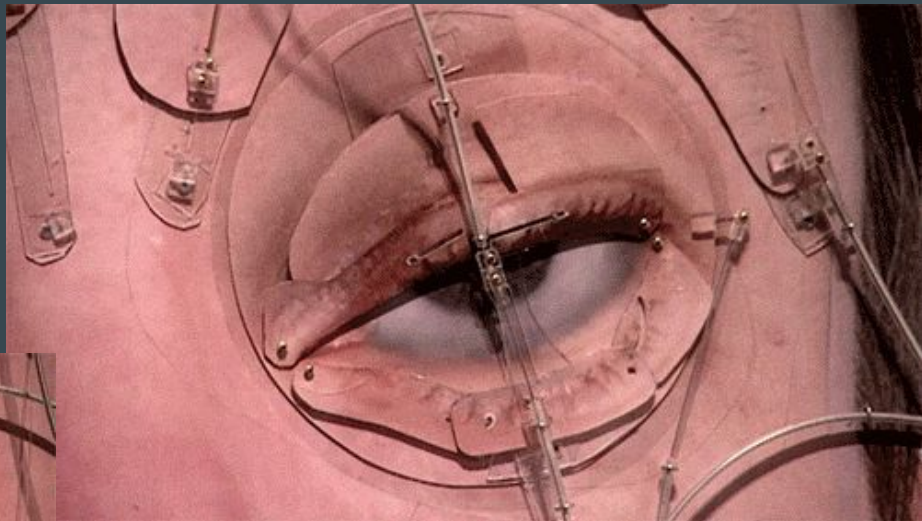
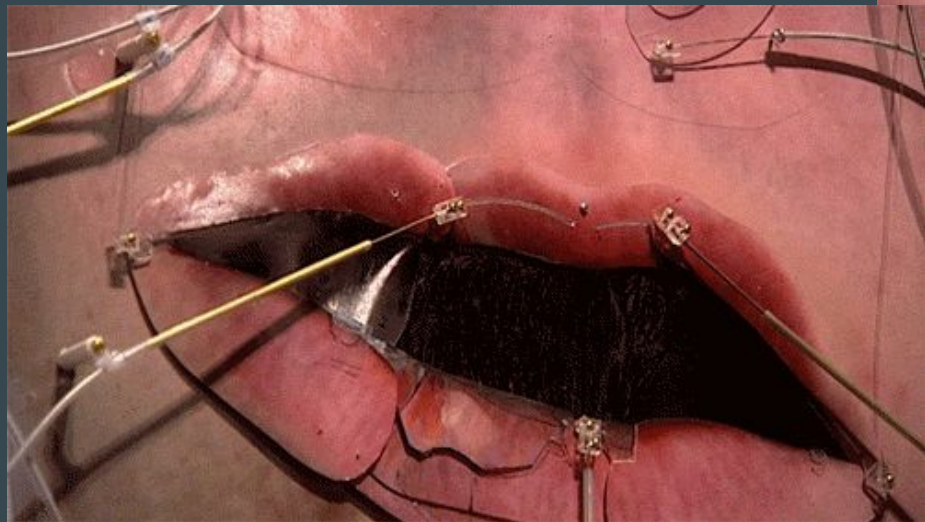


Randomized data

Emoter, 2000



Emoter detail



Music and time-based projects

Drip, 2002



- *Pentecost*, 1999
- Activated by presence of the viewer
- Figures tap out individual rhythms to create a soundscape



- *Überorgan*, 2000
- Uses abstracted melodies from familiar songs and hymns

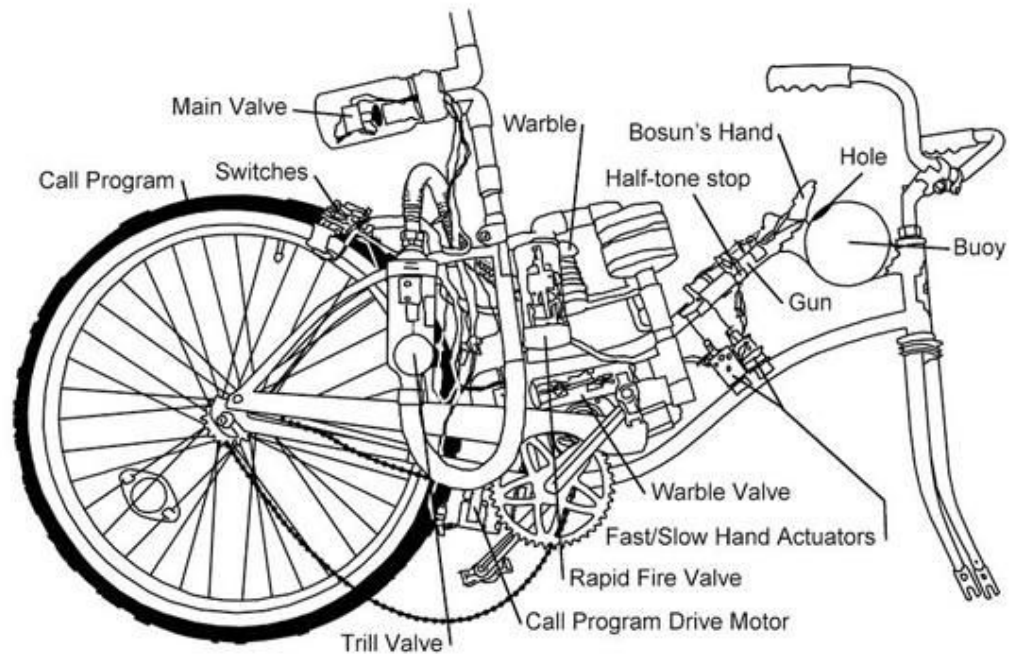








Bosun's Bass, 2015





Sources

- <http://magazine.art21.org/2010/12/10/the-shifting-aura-of-contemporary-art/uberorgan-2/>
- <https://www.flashartonline.com/article/tim-hawkinson/>
- <https://art21.org/artist/tim-hawkinson/>
- <https://www.widewalls.ch/tim-hawkinson-pace-gallery/>
- <https://artandcakela.com/2018/05/21/studio-visit-tim-hawkinson-the-indices-of-the-unknown/>
- <https://www.exploratorium.edu/blogs/spectrum/hear-music-bosuns-bass>