

“When I think back to why I became an artist, it was all about feeling as though I wasn’t normal. So that feeling of not belonging, of enjoying being by yourself, finding social situations a strain -- those aspects of reality. Even before I went to school and knew what an artist was, I was interested in creating my own world. I draw on everything. The idea of an imaginary life has always been with me. And that is (to me) one of the very healing things about making art. It allows you to transform yourself.”



Sandy Skoglund

1974

American Vacation Motel Cabins



SCATTERED CLOUDS



OLD TREE



OVERCAST



SHADY TREES

1977

Reflections in a Mobile Home



BLONDE



RED HEAD



MEDICINE CABINET



PINK SINK



IRON



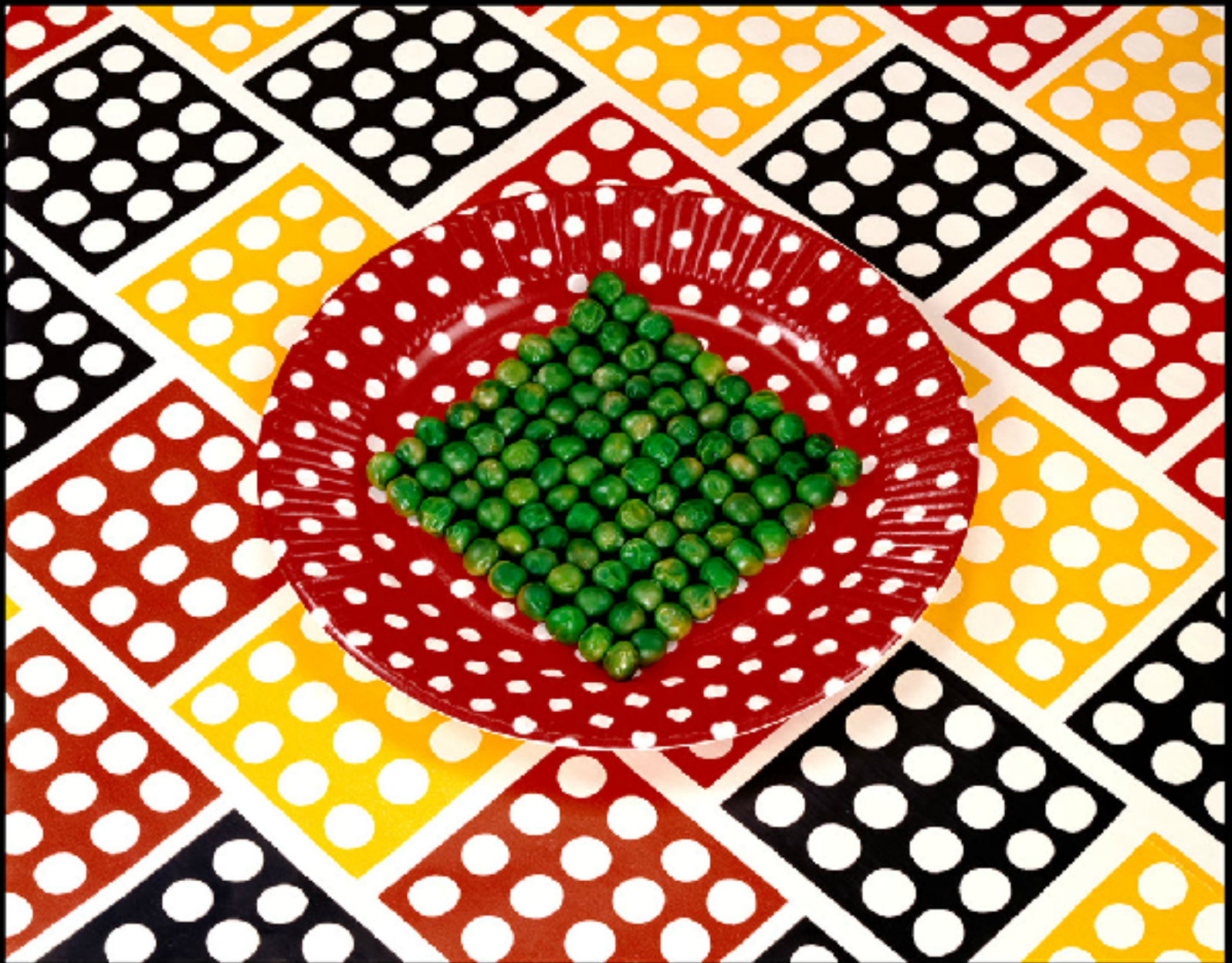
TOASTER

1978

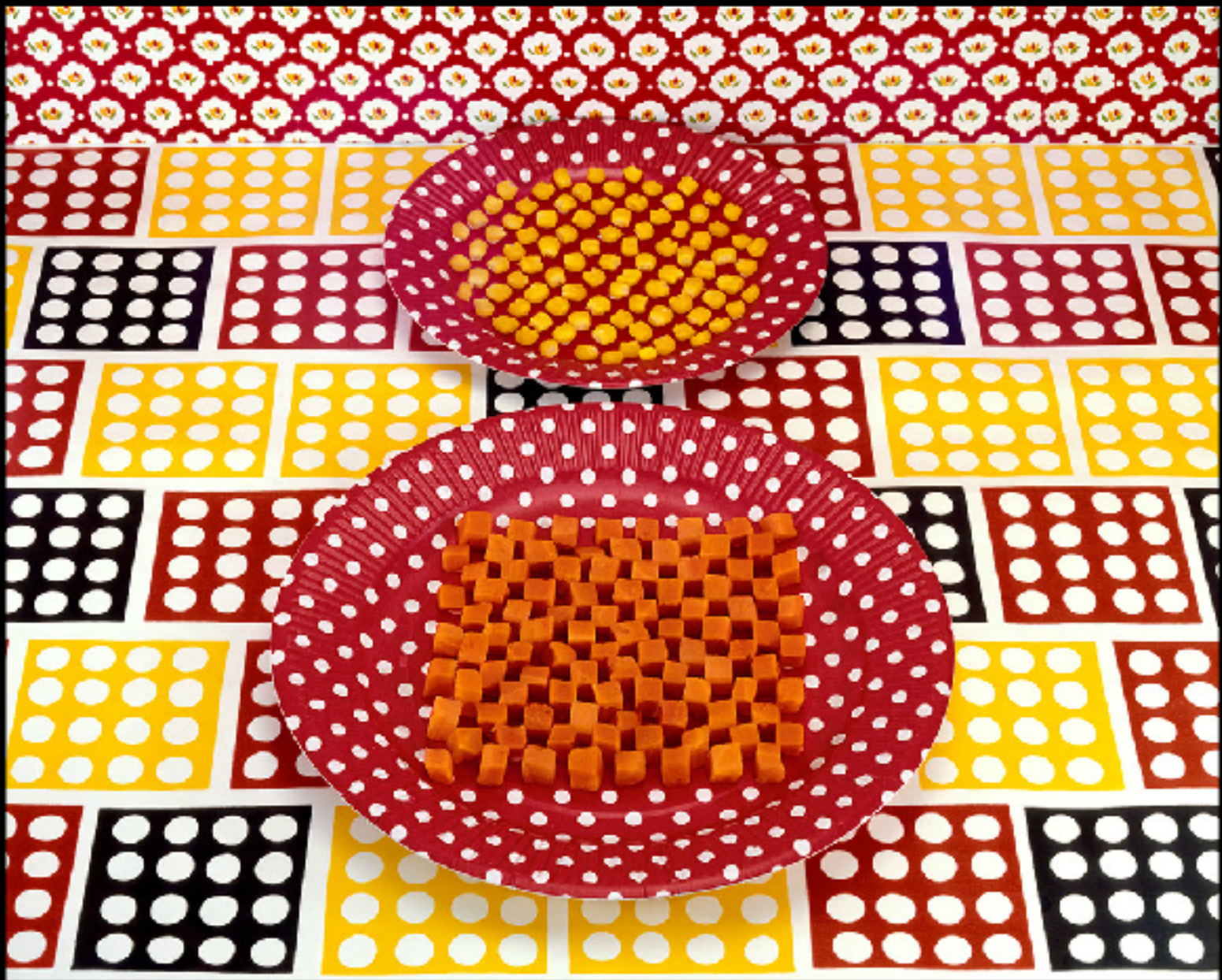
(pattern series)



COOKIES ON A PLATE



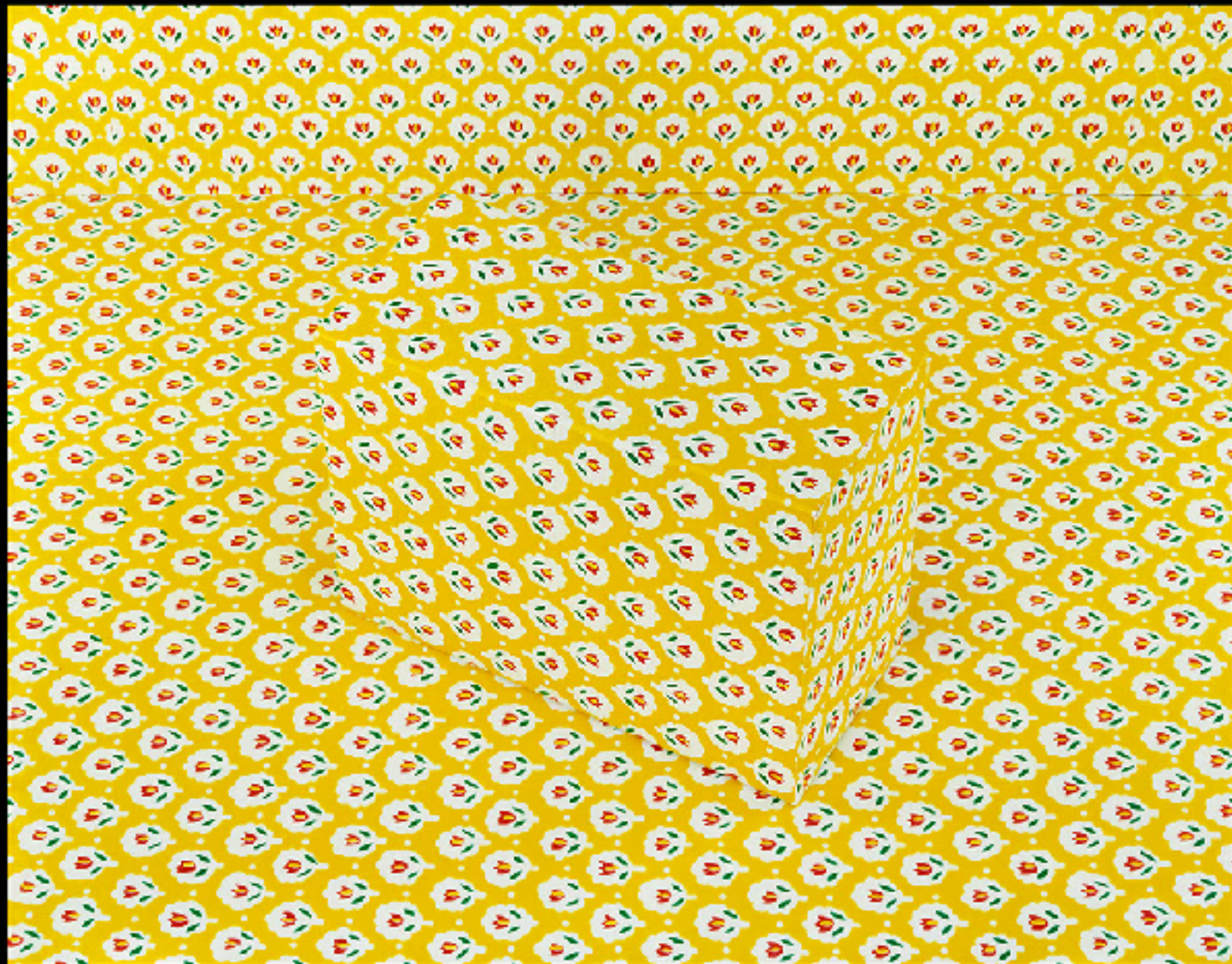
PEAS ON A PLATE



CUBED CARROTS AND KERNELS OF CORN



NINE SLICES OF MARBLE CAKE



YELLOW BOX

“I look at the art object partly through the eyes of an art historian, so I’m plagued by questions like who’s going to consume this image, and why? To some extent my role as an artist is not unlike a sociologist of American culture. I try to pretend that I’ve landed from another planet, which was essentially how I felt as a young person growing up in the suburbs. I wondered how I got there, who I was and about everything around me ... So looking at our culture from the outside in, as a stranger to itself, is a compelling angle to work from. I find American culture exotic. From this perspective, narrative elements acquire an archetypal inflection”

1979-1984



SPOONS



RADIOACTIVE CATS



FERNS



REVENGE OF THE GOLDFISH



PATIENTS AND NURSES



MAYBE BABIES



GERMS ARE EVERYWHERE

1986 - 1991



SOCK SITUATION



A BREEZE AT WORK, 1987



FOX GAMES



1989: FOX GAMES at the Museum of Denver

















GATHERING PARADISE

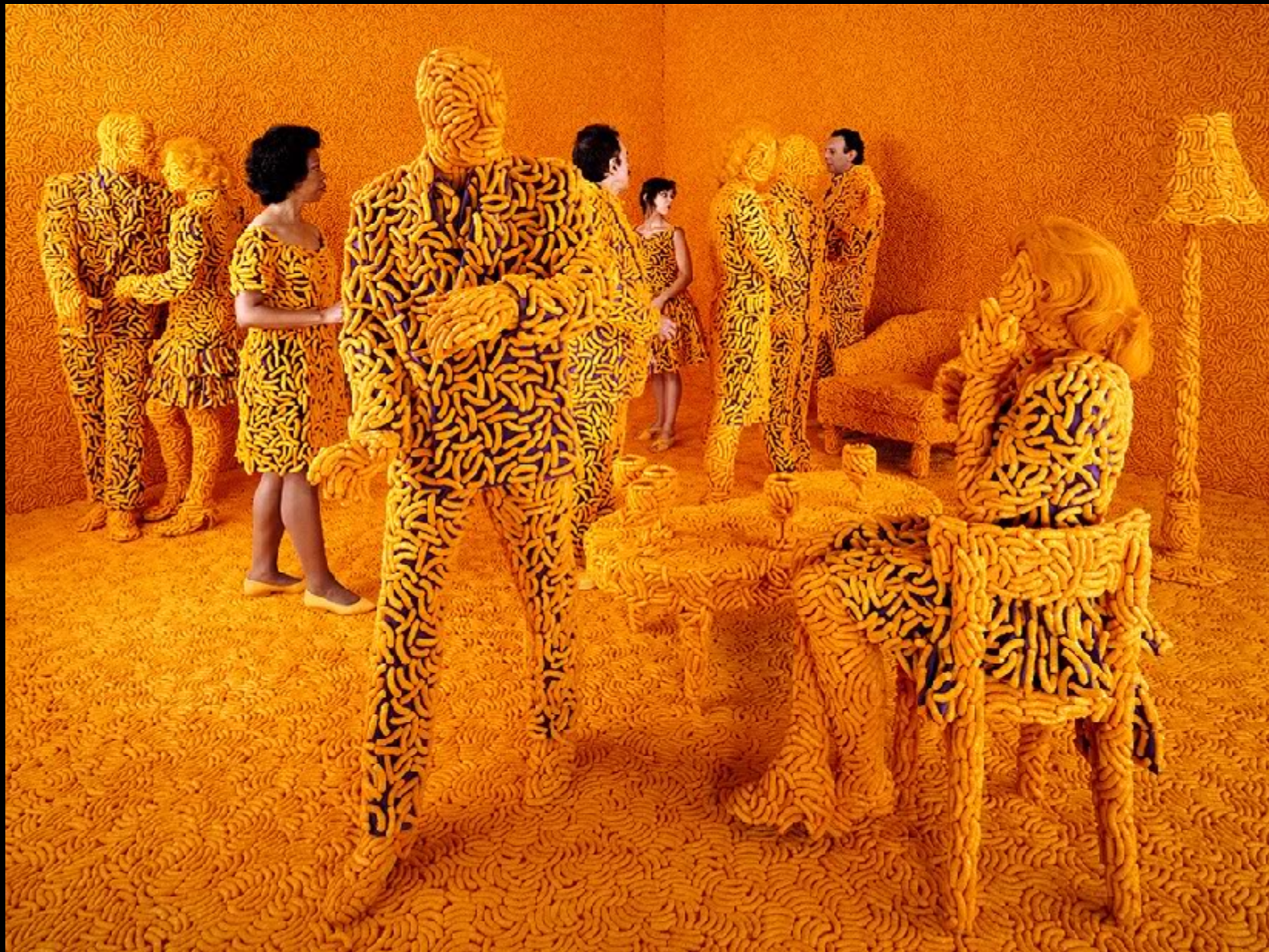
1992-1994



BODY LIMITS



ATOMIC LOVE



THE COCKTAIL PARTY



THE WEDDING



AT THE SHORE



CATS IN PARIS

1995-2003



BABIES AT PARADISE POND



SQUIRRELS AT THE DRIVE-IN



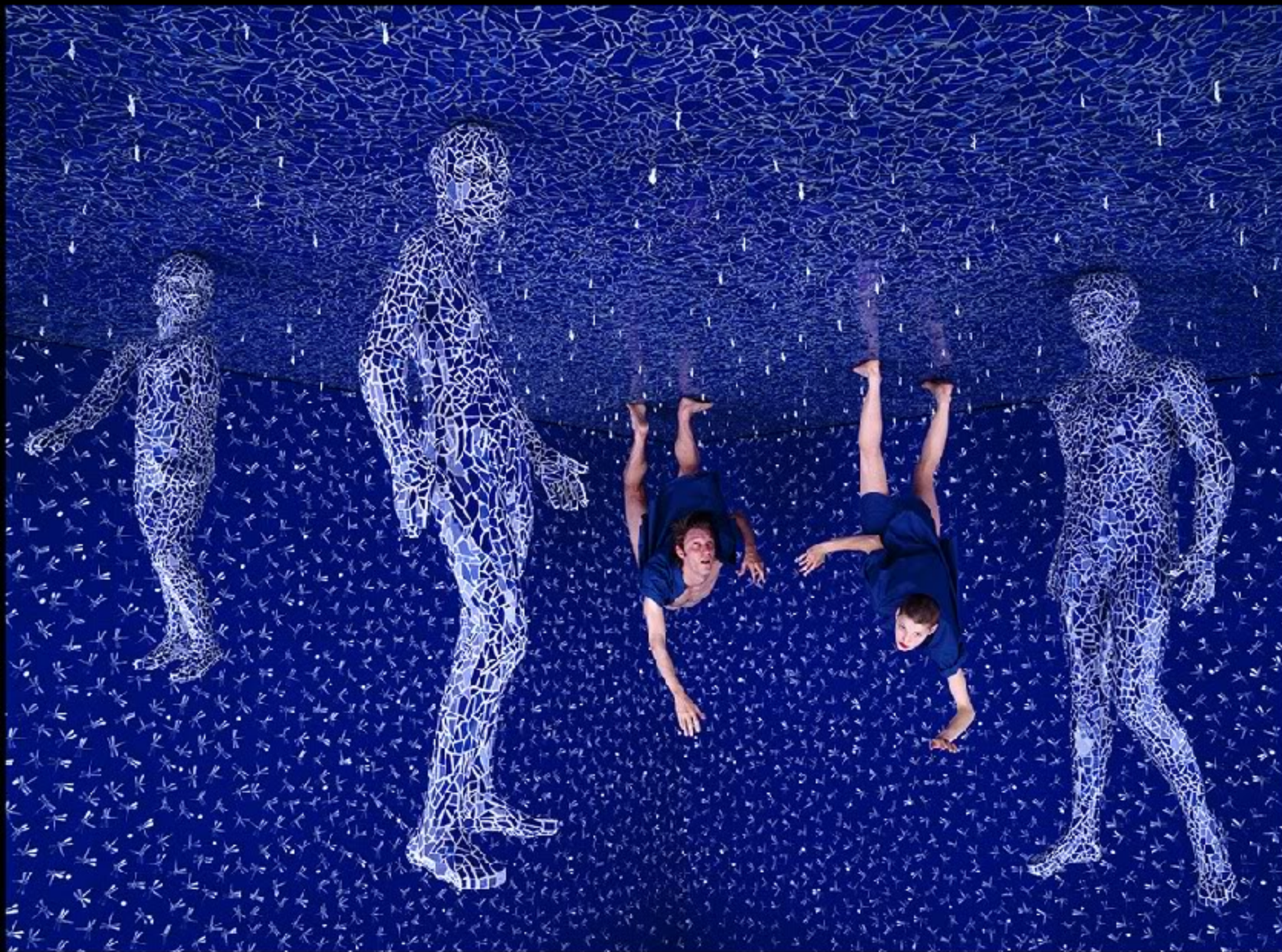
WALKING ON EGGSHELLS



SHIMMERING MADNESS



THE COLD WAR



BREATHING GLASS



RAINING POPCORN



AS FAR AS THE EYE CAN SEE

2004

True Fiction Two



BLUE BULB



GREEN GLOVE



INVENTION OF THE WHEEL



KISS IN CAR



LAWS OF INTERIOR DESIGN



PARALLEL THINKING



PURPLE BLENDER



SEMIOTICS OF SURPRISE



SOUND OF FOOD

2008

Fresh Hybrid







© 2008 Sandy Skoglund



© 2008 Sandy Skoglund

sources

- http://www.grinnell.edu/faulconergallery/exhibitions/studcurexhs/artchive/checklist/sandy_skoglund