

Lighting Options

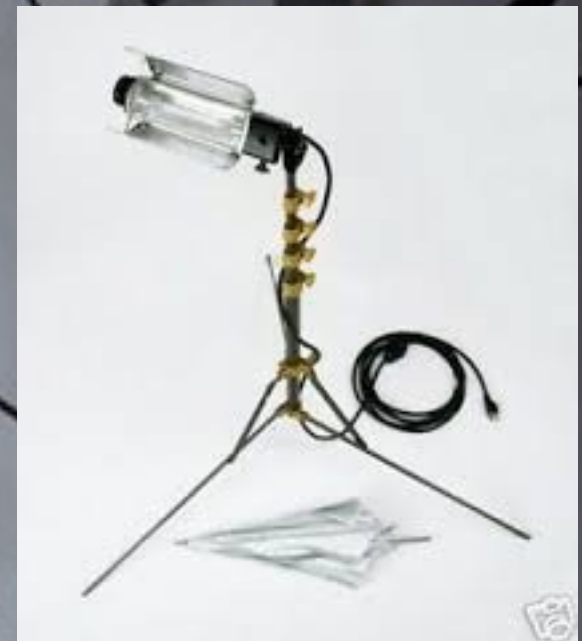
Studio Light ————— Natural Light



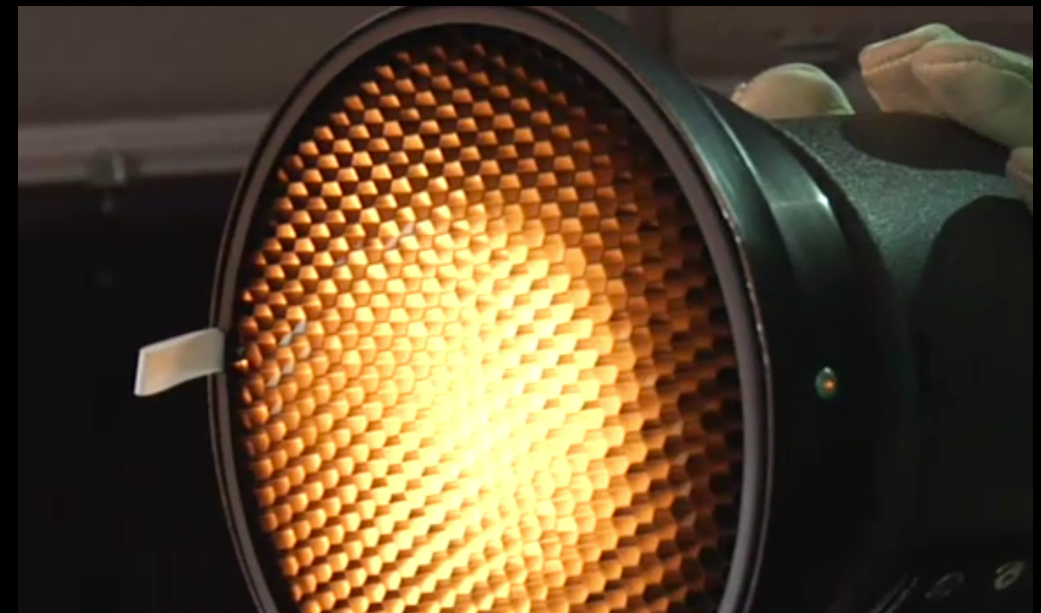
*many images borrowed from
Light Science and Magic: An Introduction to Photographic Lighting by Fil Hunter
available on Consort as an electronic resource
others from the internet or my stash!*

Studio Lighting:

strobes (flash) or continuous (hot)



reflectors and diffusers



Basic Lighting:

*your goal: to make an image
appear three dimensional*



Basic Lighting:

*your goal: to make an image
appear three dimensional*





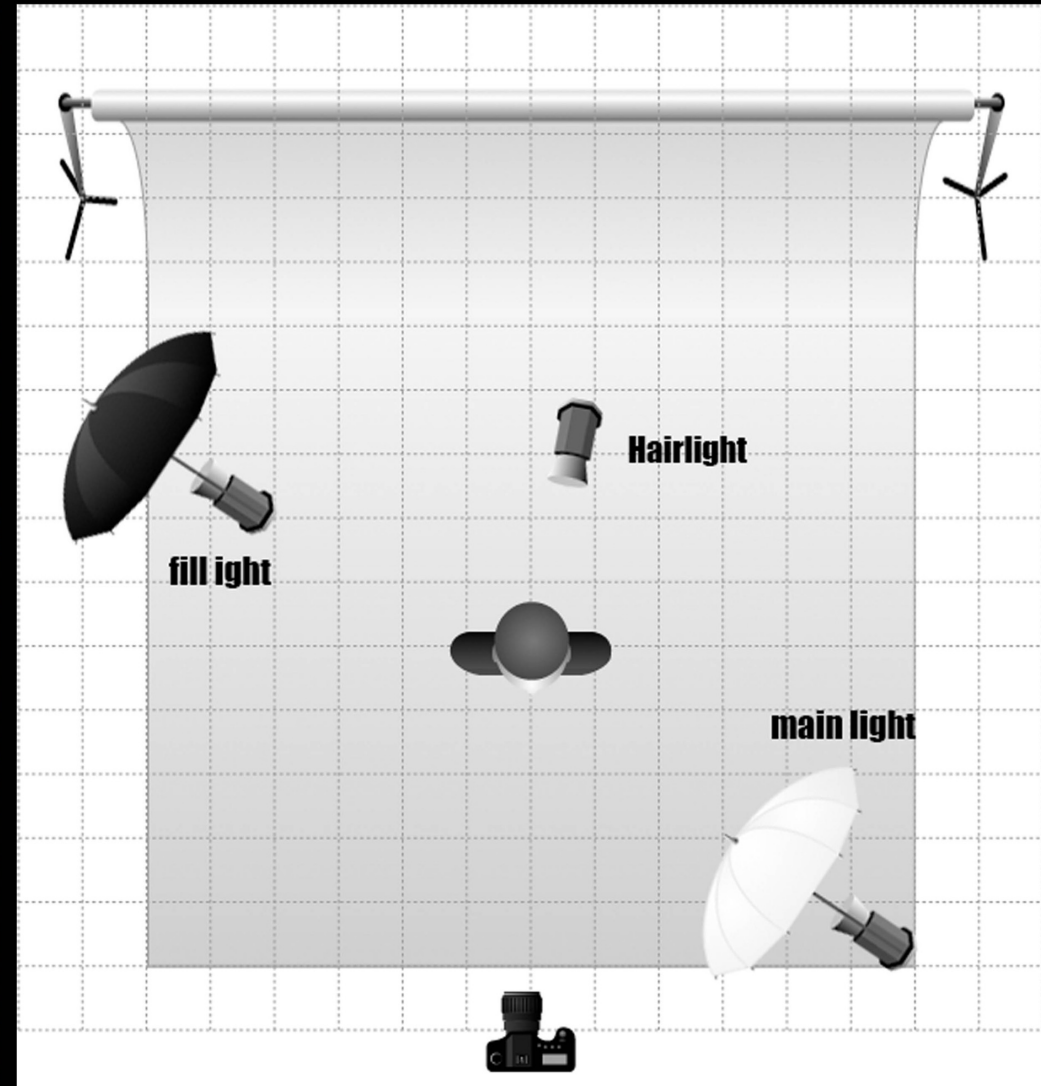
Hair Light



Key Light
stronger
closer
main light



Fill Light
weaker, further
or reflector

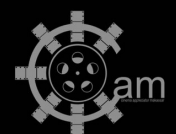


Expo time : 1/50

Apert : f.4

ISO : 100

With Rollei HFT planar 50mm f 1,8





FILL

Behind

KEY
LIGHT

Key Light

(4 Bank Kinos)



Backlight Only



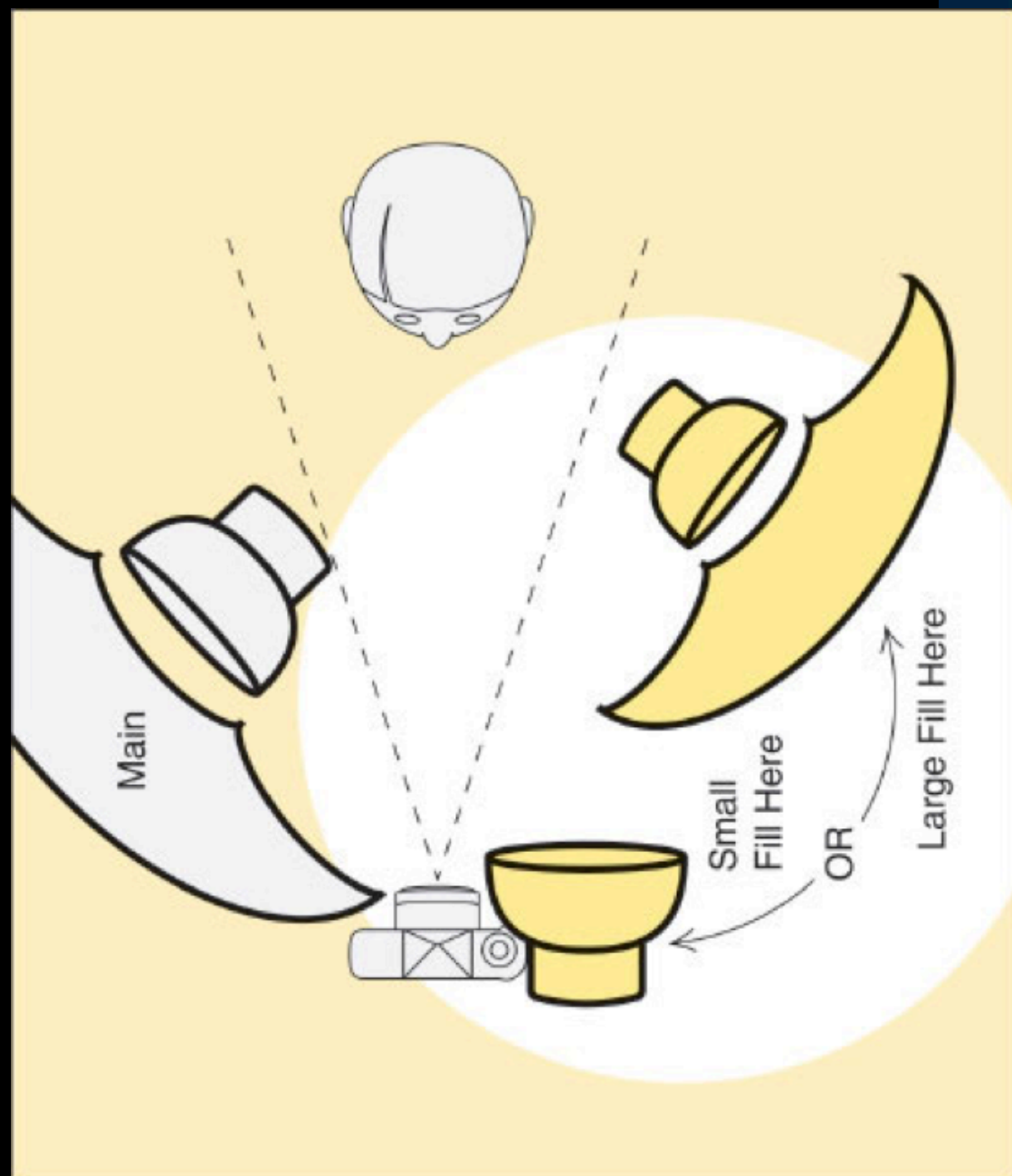
FINAL - All Lights



KEY
LIGHT



FILL



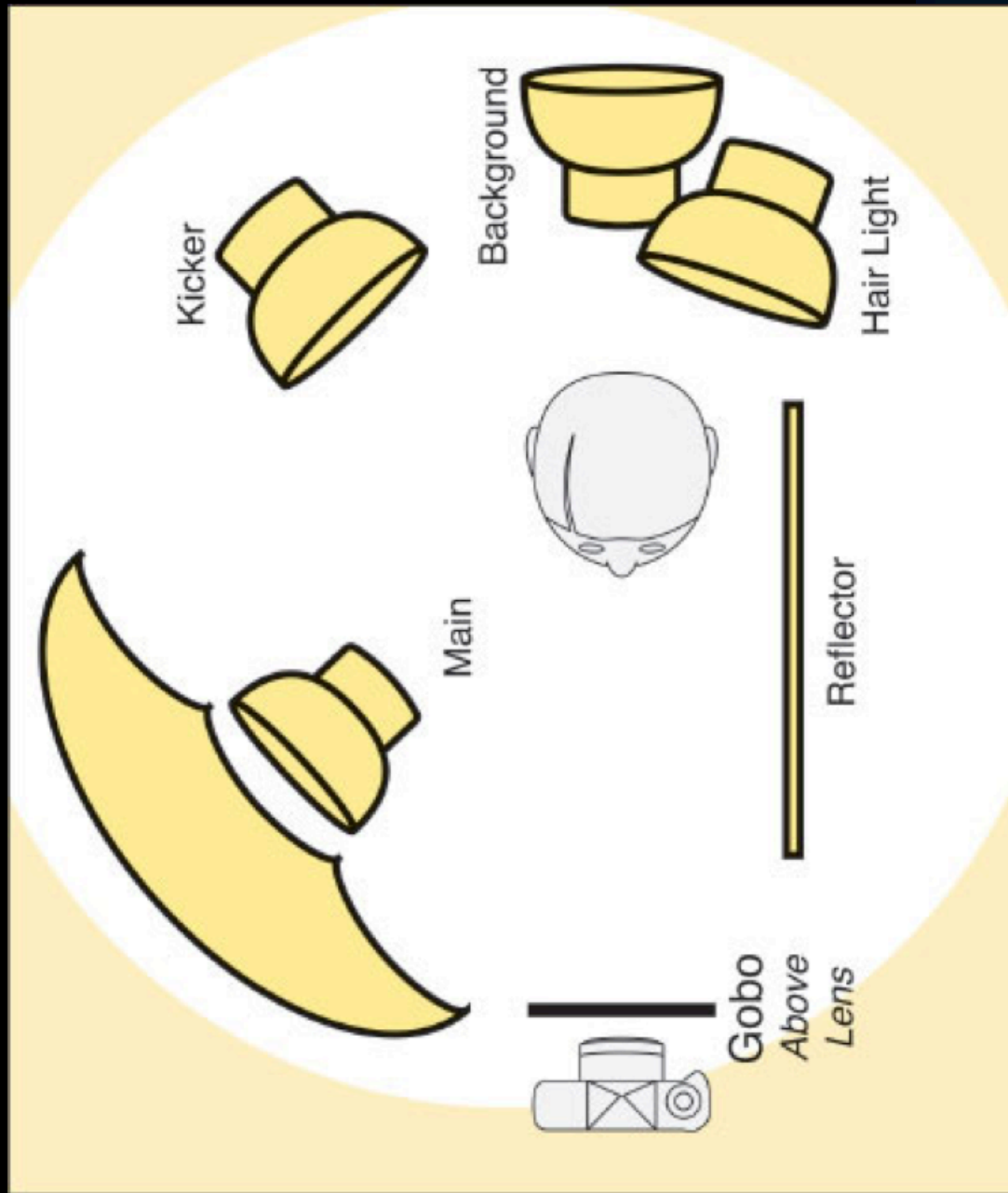
HAIR

FILL

KEY
LIGHT

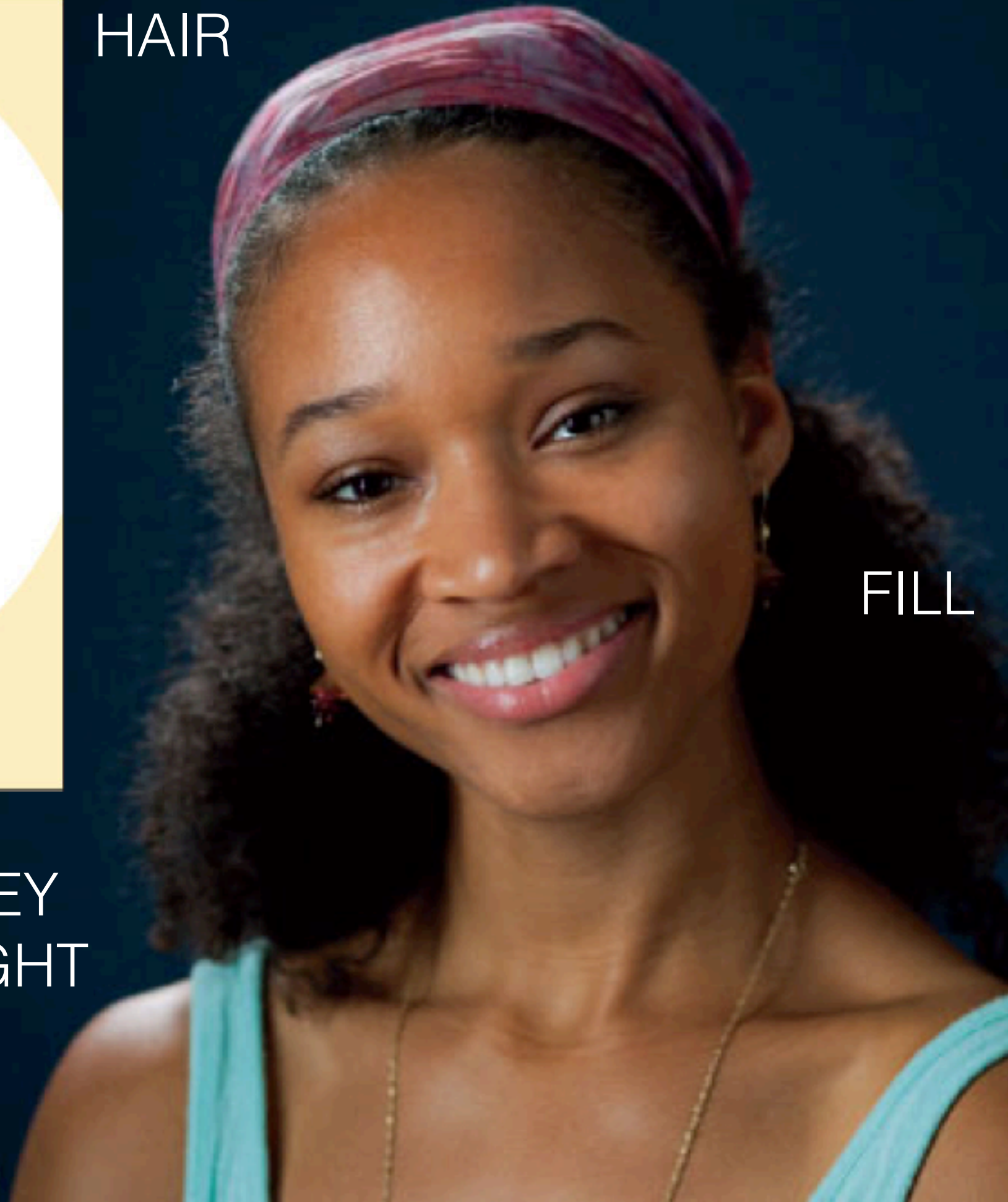


HAIR



KEY
LIGHT

FILL





LowKey (less contrast/darker)



HighKey (Brighter/contrasty)

flatter light outdoors, here the water acts as a fill light







reflector as a fill light



Varieties of lighting



for dramatic effect



© R. CARTWRIGHT PHOTOGRAPHY





the effects of colored light



©RobertNorland.com



©RobertNorland.com

Masking an Image







